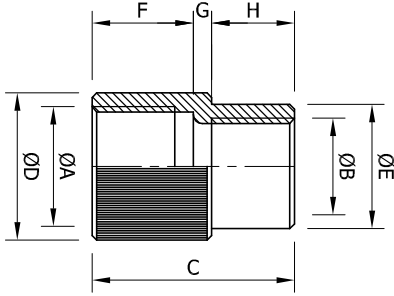
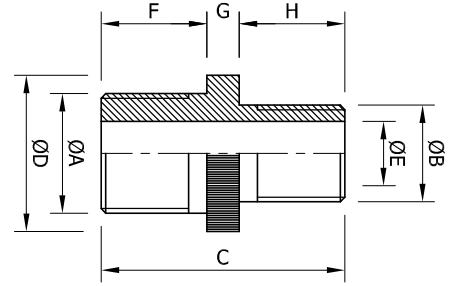




## REM



## REN



Tipi	Ağırlık (kg) Weight	A		B		C	D	E	F	G	H
		NPT	METRIC	NPT	METRIC						
REM.21	0.11	3/4"	M25x1.5	1/2"	M20x1.5	44	32	27	22	4	18
REM.31	0.23	1"	M32x1.5	1/2"	M20x1.5	50	41	27	27	5	18
REM.32	0.23			3/4"	M25x1.5	50	41	32	27	5	18
REM.41	0.24	1 1/4"	M40x1.5	1/2"	M20x1.5	50	50	27	27	5	18
REM.42	0.24			3/4"	M25x1.5	50	50	32	27	5	18
REM.43	0.25	1 1/2"	M50x1.5	1"	M32x1.5	54	50	41	27	5	22
REM.51	0.44			1/2"	M20x1.5	52	58	27	29	5	18
REM.52	0.44	1 1/2"	M50x1.5	3/4"	M25x1.5	52	58	32	29	5	18
REM.53	0.44			1"	M32x1.5	56	58	41	29	5	22
REM.54	0.44	2"	M60x1.5	1 1/4"	M40x1.5	56	58	50	29	5	22
REM.61	0.49			1/2"	M20x1.5	53	70	27	29	6	18
REM.62	0.49	2"	M60x1.5	3/4"	M25x1.5	53	70	32	29	6	18
REM.63	0.52			1"	M32x1.5	57	70	41	29	6	22
REM.64	0.53	2 1/2"	M75x1.5	1 1/4"	M40x1.5	57	70	50	29	6	22
REM.65	0.54			1 1/2"	M50x1.5	59	70	58	29	6	24
REM.71	0.75	2 1/2"	M75x1.5	1/2"	M20x1.5	56	87	27	32	6	18
REM.72	0.75			3/4"	M25x1.5	56	87	32	32	6	18
REM.73	0.75	3"	M90x2	1"	M32x1.5	60	87	41	32	6	22
REM.74	0.98			1 1/4"	M40x1.5	60	87	50	32	6	22
REM.75	0.98	3"	M90x2	1 1/2"	M50x1.5	62	87	58	32	6	24
REM.76	0.98			2"	M60x1.5	62	87	70	32	6	24
REM.81	0.99	3"	M90x2	1/2"	M20x1.5	58	100	30	32	8	18
REM.82	0.99			3/4"	M25x1.5	58	100	32	32	8	18
REM.83	0.99	3"	M90x2	1"	M32x1.5	62	100	41	32	8	22
REM.84	0.99			1 1/4"	M40x1.5	62	100	50	32	8	22
REM.85	0.99	3"	M90x2	1 1/2"	M50x1.5	64	100	58	32	8	24
REM.86	1.20			2"	M60x1.5	64	100	70	32	8	24
REM.87	1.20	2 1/2"	M75x1.5	66	100	87	32	8	26		

Tipi	Ağırlık (kg) Weight	A		B		C	D	E	F	G	H
		NPT	METRIC	NPT	METRIC						
REN.21	0.10	3/4"	M25x1.5	1/2"	M20x1.5	53	34	14	23	7	23
REN.31	0.17	1"	M32x1.5	1/2"	M20x1.5	59	39	14	29	7	23
REN.32	0.17			3/4"	M25x1.5	59	39	19	29	7	23
REN.41	0.26	1 1/4"	M40x1.5	1/2"	M20x1.5	62	49	14	29	10	23
REN.42	0.26			3/4"	M25x1.5	62	49	19	29	10	23
REN.43	0.26	1 1/2"	M50x1.5	1"	M32x1.5	68	49	24	29	10	29
REN.51	0.68			1/2"	M20x1.5	62	54	14	29	10	23
REN.52	0.68	1 1/2"	M50x1.5	3/4"	M25x1.5	62	54	19	29	10	23
REN.53	0.68			1"	M32x1.5	68	54	24	29	10	29
REN.54	0.68	2"	M60x1.5	1 1/4"	M40x1.5	68	54	32	29	10	29
REN.61	0.69			1/2"	M20x1.5	62	69	14	29	10	23
REN.62	0.69	2"	M60x1.5	3/4"	M25x1.5	62	69	19	29	10	23
REN.63	0.71			1"	M32x1.5	68	69	24	29	10	29
REN.64	0.71	2 1/2"	M75x1.5	1 1/4"	M40x1.5	68	69	32	29	10	29
REN.65	0.71			1 1/2"	M50x1.5	68	69	38	29	10	29
REN.71	0.71	2 1/2"	M75x1.5	1/2"	M20x1.5	67	84	14	32	12	23
REN.72	0.71			3/4"	M25x1.5	67	84	19	32	12	23
REN.73	0.97	3"	M90x2	1"	M32x1.5	73	84	24	32	12	29
REN.74	0.97			1 1/4"	M40x1.5	73	84	32	32	12	29
REN.75	0.97	3"	M90x2	1 1/2"	M50x1.5	73	84	38	32	12	29
REN.76	0.97			2"	M60x1.5	73	84	49	32	12	29
REN.81	1.22	3"	M90x2	1/2"	M20x1.5	67	99	14	32	12	23
REN.82	1.22			3/4"	M25x1.5	67	99	19	32	12	23
REN.83	1.22	3"	M90x2	1"	M32x1.5	73	99	24	32	12	29
REN.84	1.22			1 1/4"	M40x1.5	73	99	32	32	12	29
REN.85	1.22	3"	M90x2	1 1/2"	M50x1.5	73	99	38	32	12	29
REN.86	1.22			2"	M60x1.5	73	99	49	32	12	29
REN.87	1.48	2 1/2"	M75x1.5	76	99	65	32	12	32		

Malzeme: Çelik / Material is Steel  
Ölçüler mm'dir. / Dimensions in mm.